

## Enstone Road, Enfield, EN3 7WL Auction Guide £200,000 Leasehold

Being Sold via Secure Sale online bidding. Terms & Conditions apply. Starting Bid £200,000.

KINGS GROUP are pleased to present this well-presented two-bedroom flat located on Enstone Road.

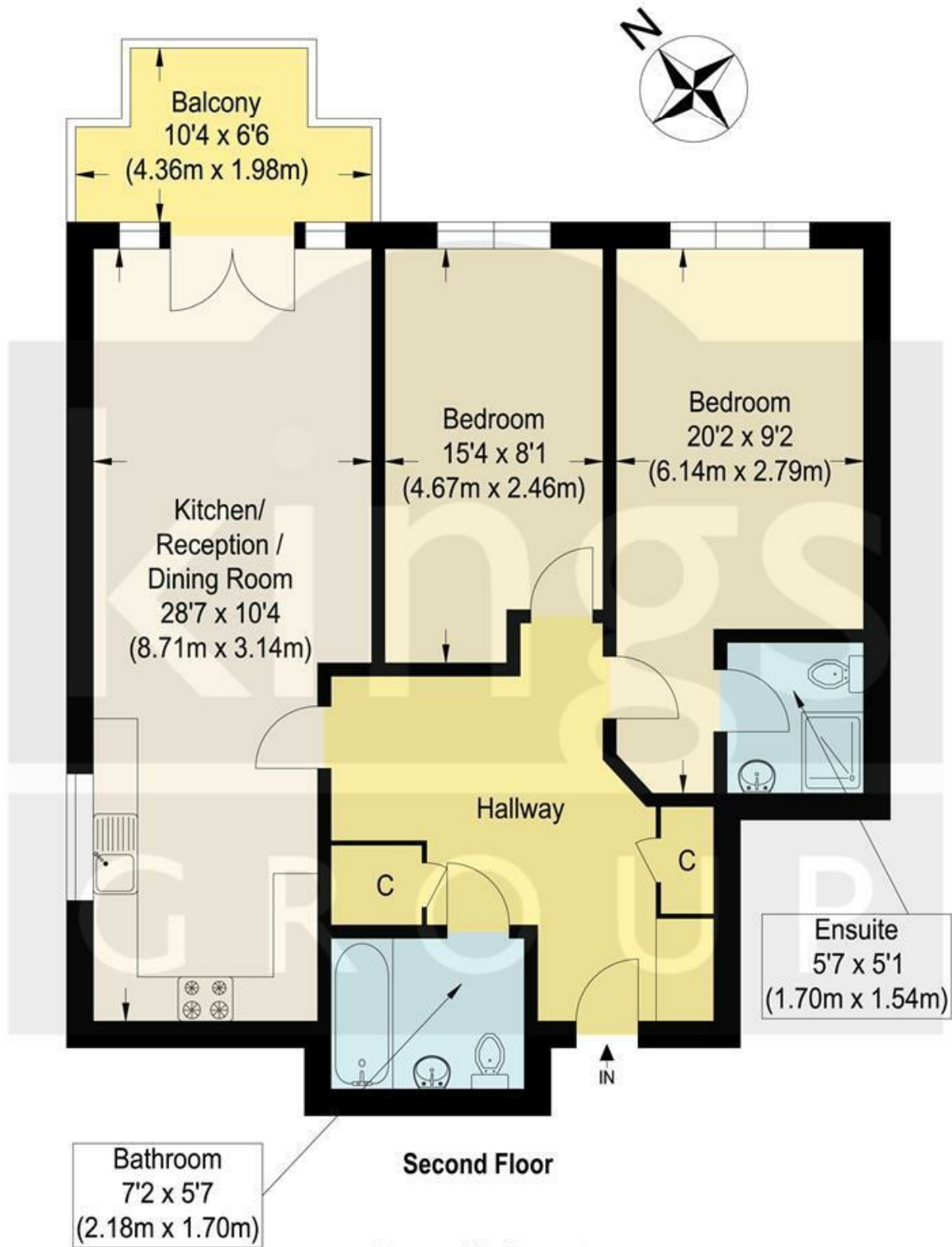
Situated on the second floor, the property offers a bright and spacious living environment. It comprises two good-sized bedrooms, a modern bathroom with ceiling speakers, and a contemporary fitted kitchen. Double glazed windows allow plenty of natural light, creating a comfortable and welcoming atmosphere.

Externally, the property benefits from communal gardens and residents' parking.

Located close to local shops and amenities, the flat also offers excellent transport links, with Brimsdown Station nearby providing access to Tottenham Hale and central London.

Lease 128 Years Remaining

**Enstone Road, Enfield, EN3 7WL**



Approximate Gross Internal Floor Area : 73.0 sq m / 785.76 sq ft  
 Illustration for identification purposes only, measurements are approximate, not to scale.

